

Protos is a destination for energy, innovation and industry. Welcome to the latest edition of our community newsletter where you can find out what's been happening at the Protos site and what to expect over the coming weeks and months.



## LATEST NEWS



### ORIGIN SIGNALS A NEW ERA OF NET ZERO OPPORTUNITY FOR ELLESMERE PORT

ORIGIN is one of the most important industrial and employment clusters in the UK, including 1,300 businesses and employing 24,100 people. Covering the industrial area around Ellesmere Port, including Protos, it aims to be a global leader in energy and industrial decarbonisation. It's part of the momentum to secure even more inward investment in the expansive industrial heartland, in turn supporting the green industrial revolution to deliver one of the world's first Net Zero Carbon Industrial clusters.

Read more [here](#)

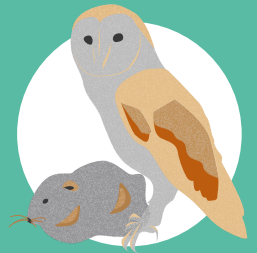
## AT A GLANCE

The Protos Community Benefit Fund is backing brilliant local causes



Construction continues at Energy Recovery Facility

Update on the nature areas



## INTRODUCING EVERO

Bioenergy Infrastructure Group (BIG) the company behind the biomass facility at Protos has rebranded as Evero. Evero have five facilities across the UK that are recovering energy from waste wood and preventing it ending up in landfill. You can read Evero's guest blog about how they are reimagining the potential of waste wood as a fuel [here](#).



## LATEST PROTOS PROGRESS

### ENERGY RECOVERY FACILITY (ENCYCLIS)

Construction of the Energy Recovery Facility (ERF) at Protos is continuing. The remaining civil works are progressing alongside construction of the two boilers and installation of other equipment. Preparation for the installation of electrical equipment is underway. You can see a video showing progress of construction between September 2022 and March 2023 on the Encyclis YouTube channel <https://youtu.be/i2jsUcFIUSw>

### JOB VACANCIES AT ENCYCLIS

Over the coming months the Encyclis team will be recruiting for operational and maintenance roles in preparation for the next phase of the project. All vacancies will be advertised on the careers section of the Encyclis website (<https://careers-encyclis.icims.com/>). The team have already been promoting vacancies via the local Ellesmere Port & Chester Jobcentre Plus. Anyone interested in finding out more or hearing about future recruitment events should keep an eye on the above website and the Encyclis LinkedIn page.



## CHESHIRE GREEN HYDROGEN

A consultation has been launched by Grenian Hydrogen on Cheshire's first 'green' hydrogen project, set to be located at Protos. Cheshire Green Hydrogen will use renewable electricity, including locally produced electricity from the Frodsham wind farm, and from the grid, to generate 20 megawatts of low carbon hydrogen to fuel local industry, including glass manufacturer Encirc.

Find out more [here](#)



## NATURE AREAS

The Cheshire Wildlife Trust (CWT) continued to manage the nature areas at Protos during an unusually wet Summer!

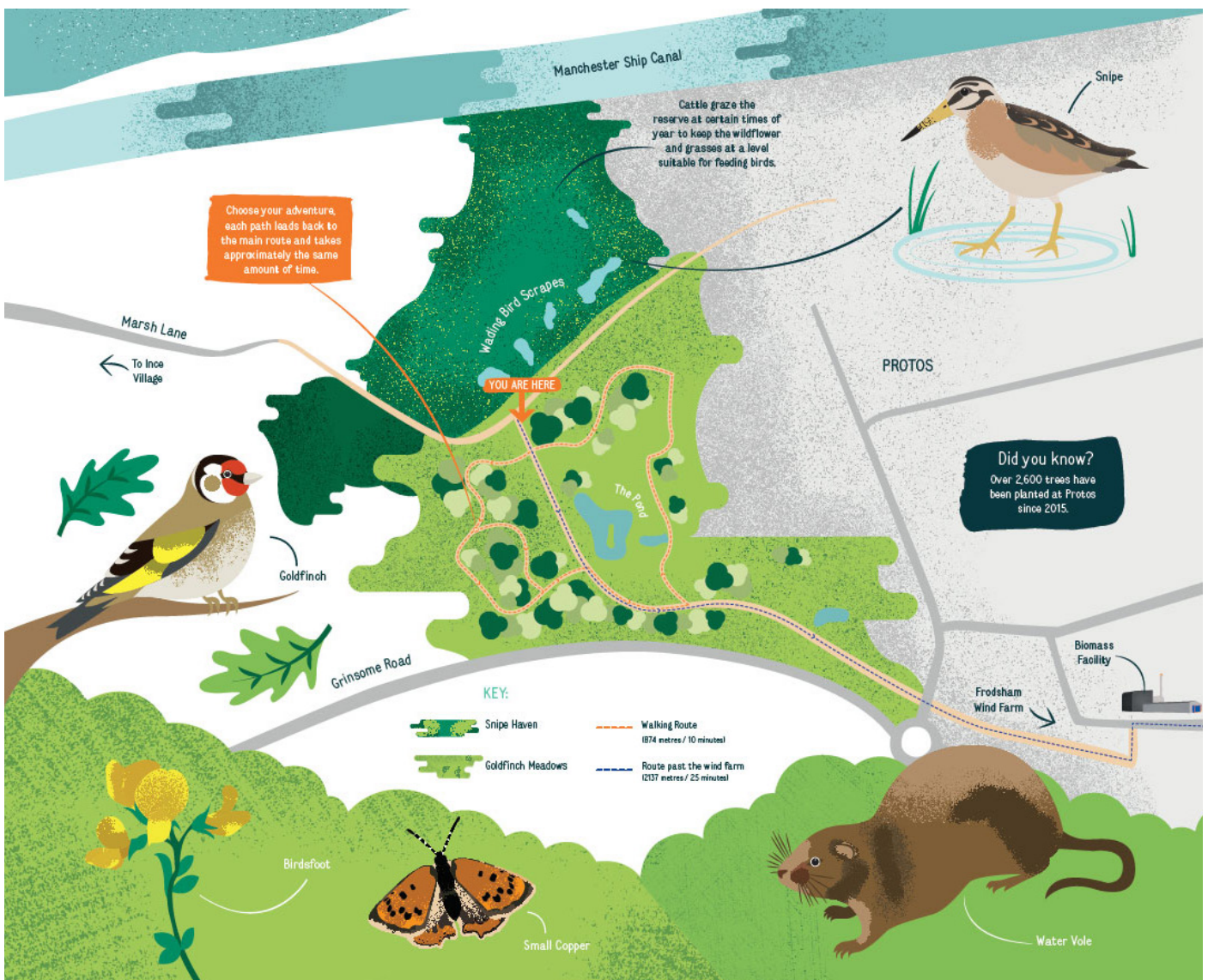
Goldfinch Meadows, lush with vetchling and common knapweed, have been alive with the hum of pollinators, with the meadow brown butterfly taking centre stage this year.

It was a thriving season for a variety of species of bird, with the likes of reed bunting, goldfinch, gadwall, and little grebe showing signs of breeding. Barn owls have once again chosen the Protos owl box as their nesting site and with

the support of the Broxton Barn Owl Group, four healthy owlets were recorded in July.

The nature areas saw plenty of other wildlife including brown hares and the return of water voles.

As always, Goldfinch Meadows remains accessible to the public. To ensure the safety of breeding birds, it is important to keep dogs on leashes. Dogs off lead venturing into the pond and ditches on Goldfinch Meadows can disrupt adult birds from their nests and pose a risk of trampling and harming the vulnerable chicks.



## PROTOS COMMUNITY FUND UPDATE

The Protos Community Fund makes funds available for local community causes every year. Here are some of the recent projects we've been proud to support.

### ELTON PRIMARY SCHOOL CULTURAL VISITS

Pupils at Elton Primary School took part in a variety of visits to some of the North West's best cultural attractions. The children visited Chester Zoo, Deva Roman Centre, Jodrell Bank, Imagine that Science Discovery Centre and Beeston Castle, providing enriching and cultural experiences and lasting memories.

*"Experiences such as these trips are invaluable in motivating children with their learning and in helping to give them the cultural capital they need to develop into citizens of the future. Our locality is so rich in opportunities for such experiences but are beyond the financial means of many of our families. We are all immensely grateful for the support from Protos which has allowed us to undertake these trips which otherwise we would never have been able to offer. Trips which have increased our children's environment awareness, inspired them in history and science, and opened their eyes to our locality."*

Mr Kevin Manning, Headteacher



*"That trip was amazing.' 'I really enjoyed getting to see the replica items in the workshop and experience the roundhouse.' 'It made my learning come to life!"*

Year 3 child



### A NEW BENCH FOR HARMERS WOOD

Visitors to Harmers Wood in Helsby can now relax on a new bench as they take a stroll through the nine-acre wood. The wood is well used for walks and people visiting had asked for more seating further into the wood to rest and enjoy the woodland surroundings.

The Friends of Harmers Wood Trust volunteers have also been provided with new equipment to help maintain the wood and ensure pathways stay safe for the public, including a telescopic pruner, bypass lopper and rechargeable sander.

*"We are thrilled with the bench. We have sited it in a tranquil part of the wood, where walkers can sit and survey and enjoy the beautiful, peaceful surroundings."*

*"The bench was custom made to our requirements and should last for many years. We are very grateful to our volunteers and to Protos for giving us the means to acquire and site the bench."*

Mrs Teresa Summers, Chair and Trustee,  
The Friends of Harmers Wood Trust

## ELTON ALLOTMENTS IMPROVEMENTS

The Elton Gardeners Association were looking for support to make some improvements to Elton Allotments. With help from the Protos Community Fund the members now have a new shed to store a sit on mower and other tools, enabling them to keep the allotments neat and tidy and saving on paying for a gardener. A new additional carpark has been provided for plot holders and members of the public to use, so more people can visit the allotments and enjoy the tranquil environment. And new fencing has been installed around the communal areas.



# £50,000

was contributed to the fund in 2023, with a further £50,000 now available for 2024

The benefit fund is open to bids for funding from organisations and causes in the parishes of Ince, Elton, Helsby, Frodsham, Thornton le Moors and Little Stanney.

Transport, community buildings, sport, youth, and heritage are among the wide range of causes considered.



Carpets at Elton School



Tables and chairs for over 50s club



Playground equipment



Village hall refurbishment Ince Village Hall



Tennis equipment & court markings at Helsby Tennis Club



Equipment for Frodsham Bell Ringers

For more details and how to apply visit [protos.co.uk/how-to-apply](https://protos.co.uk/how-to-apply).

## WHAT IS PROTOS?

Protos is Peel NRE's destination for energy, innovation and industry. Located at Ince, the £700m strategic energy hub clusters complementary businesses, including resource recovery and energy intensive industries, associated supply chain and energy generation.



# PROTOS

**Peel NRE**  
RE-ENERGISING NATURAL RESOURCES

Get in touch for more information on Protos

Visit: [protos.co.uk](https://protos.co.uk)

Email: [community@protos.co.uk](mailto:community@protos.co.uk)

Call: Freephone 0800 689 1095 (During office hours Mon-Fri).

You can also follow us on X (Formerly Twitter): [@ThisIsProtos](https://twitter.com/ThisIsProtos)

Linkedin: [Protos](https://www.linkedin.com/company/protos)